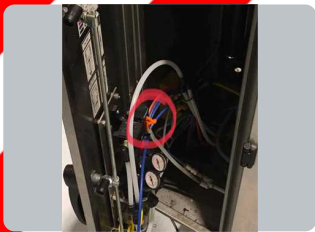




ISOLATOR LOCKOUT CARD

Function	Powers pneumatic parts e.g. splicers, brakes, sealing pressure, printer head	LOTO Card No 1 of 2
Energy Type	Pneumatic	
Location	Rear of machine, inside pneumatic controls cabinet	



Device	Exhausting Isolation Valve
Lock Method	Padlock through lockable device

Isolation Instructions

1. Stop machine at control panel
2. Push bottom of orange tab on side of isolator to exhaust air
3. Apply padlock through orange tab at side (padlock hole at top)
4. Test machine start

MACHINE OVERVIEW CARD

Machine **Flow Wrapper**

LOTO Cards **2**



No	Source	Isolator	Function
1	Electricity	Electrical isolation switch	Powers conveyors, fin sealing wheels, rotary end sealer, and heaters.
2	Pneumatic	Exhausting Isolation Valve	Powers pneumatic parts e.g. splicers, brakes, sealing pressure, printer head



ISOLATOR LOCKOUT CARD

Function	Powers conveyors, fin sealing wheels, rotary end sealer, and heaters.	LOTO Card No 2 of 2
Energy Type	Electricity	
Location	Rear of machine, near end of infeed conveyor	



Device	Electrical isolation switch
Lock Method	Padlock through lockable device

Isolation Instructions

1. Stop machine at control panel
2. Slide isolator down to off position
3. Apply padlock through isolator
4. Test machine start

MACHINE OVERVIEW CARD

Machine **Flow Wrapper**

LOTO Cards **2**



No	Source	Isolator	Function
1	Electricity	Electrical isolation switch	Powers conveyors, fin sealing wheels, rotary end sealer, and heaters.
2	Pneumatic	Exhausting Isolation Valve	Powers pneumatic parts e.g. splicers, brakes, sealing pressure, printer head